

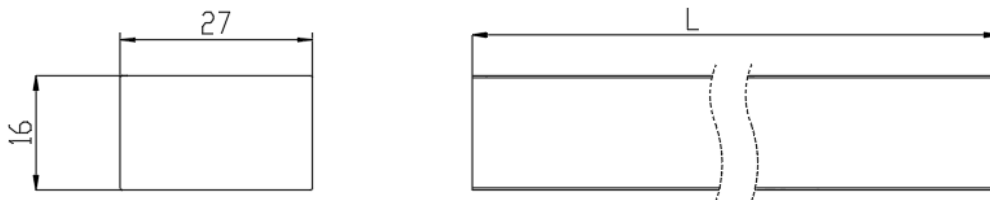
## 1. Features

- ✧ Free bending and Twist-able
- ✧ High efficacy LED inside
- ✧ Dual-color silicone extrusion
- ✧ UV and yellowish resistant
- ✧ IP67 and salt-mist proof
- ✧ L70B50 > 50,000hrs
- ✧ UL 94 V-0
- ✧ Easy installation and re-connect accessories
- ✧ Min. top bending radius 20 cm
- ✧ Min side bending radius 40cm

## 2. Applications

- ✧ Lighting engine for special linear luminaries
- ✧ Building wall washer
- ✧ Handrails
- ✧ Entertainment plazas and bridges.
- ✧ Big lighting box side lighting

## 3. Dimensions



### Notes:

1. Unit: mm
2. L = 5meters for 24V products in standard configuration

## 4. Environmental and Application Conditions

Ambient temperature range (Ta on free air)	-40°C ~ +55°C
Operating (case) temperature range (Tc)	-40°C ~ +65°C
Storage temperature range	-40°C ~ +85°C
IP rating	IP67

# WK2716TS General Specification

## 5. Electrical parameters

Item	WK2716TS-24V
Supply voltage range	24.0±1.0 VDC
Supply Current range (per meter)	Typ. 1000mA
Power range (per meter)	Typ. 24W
ESD protection	Contact 4KV, Air 8KV
Max. length for single end power	5 meters
Max. length for two ends power	10 meters
LED Qty and pitch	24LEDs/m, P: 41.67mm
Cutting unit length	41.67mm

## 6. Optical parameters (ta=25°C)

Part No.	Colorimetric Parameters		Typ. Lumen	CRI
	Color	Value		
WK2716TS	White	5000K	1900lm/m	80
	White	4000K	1900lm/m	80
	White	3000K	1850lm/m	80
	White	2700K	1780lm/m	80



Asymmetric 20x45 degrees

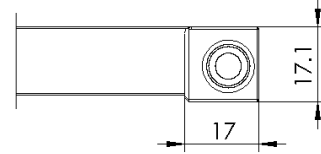
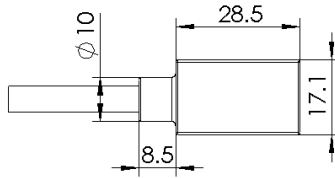
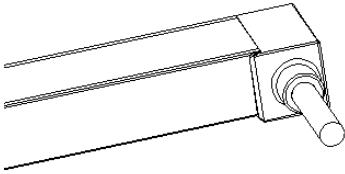


# WK2716TS General Specification

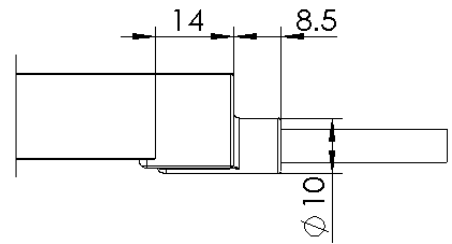
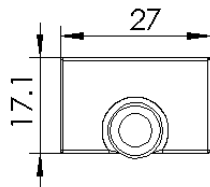
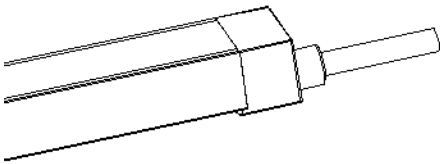
## 7. Connectors

IP67 power feed and end cap by injection

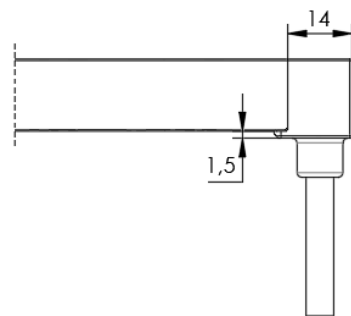
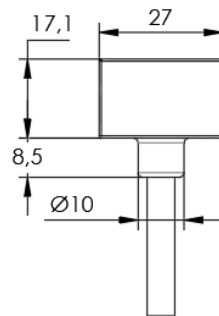
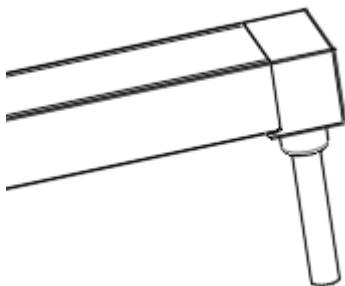
### Side feeder



### End feeder



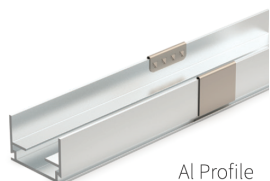
### Bottom feeder



# WK2716TS General Specification

## 8. Installation accessories

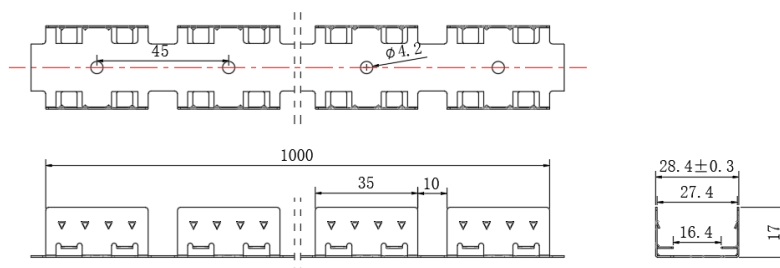
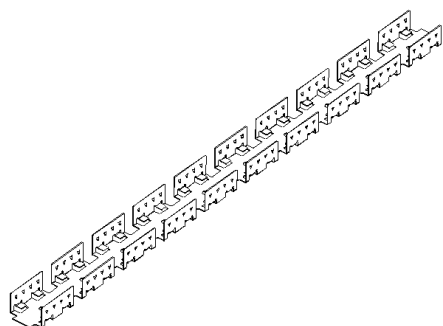
Type 1, AL profile for outdoor application (1meter per pcs, can be cut to certain length needed)



Type 2, AL Clips outdoor application (50mm per pcs)



Type 3, Stainless installation chain (1mtr per pcs)



## 9. Attention

- The LED wall washer itself and all its components may not be mechanical stressed.
- Please ensure that the power supply is adequate power to operate the total load. Only qualified personnel should be allowed to perform installations.
- The design of the housing should be according to the IP standards in the application.
- The LED wall washer can light up 3.5meter wall, when the distance between LED wall washer and wall is 20cm;
- The optimal distance between LED wall washer and wall is 10~40cm;
- If surge protection structure not within power supplier, a lightning protector should be needed additionally.
- Before cutting and making reconnection, please read the user manual, and please ensure you have read and fully understand it.
- Product can be bend in any direction, Min. top bending radius 20 cm, Min side bending radius 40cm.

