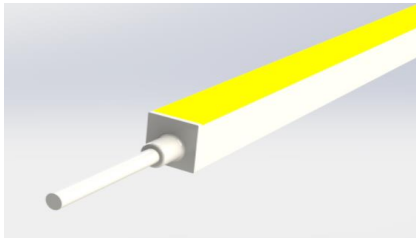


WK2424S The reliable LED flexible neon solution



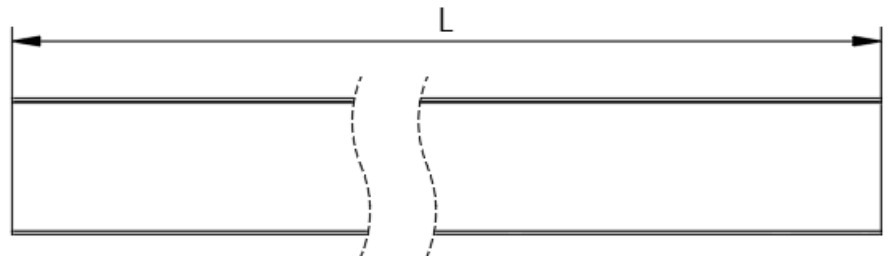
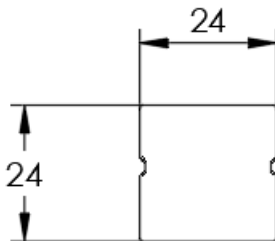
1. Features

- ✧ Side bending and Top lighting
- ✧ Lumileds 2835LED inside
- ✧ Dual-color silicone extrusion
- ✧ UV and yellowish resistant
- ✧ IP67 and salt-mist proof
- ✧ L70B50 > 50,000hrs
- ✧ UL 94 V-0
- ✧ Easy installation and re-connect accessories
- ✧ Min. bending radius 15cm

2. Applications

- ✧ Neon tube light source
- ✧ Building and sign outline lighting
- ✧ General and cove lighting
- ✧ Ships, boats and trucks outline lighting
- ✧ Bathroom, spa room lighting

3. Dimensions



Notes:

1. Unit: mm

4. Environmental and Application Conditions

Ambient temperature range (Ta on free air)	-40°C ~ +65°C
Operating (case) temperature range (Tc)	-40°C ~ +65°C
Storage temperature range	-40°C ~ +85°C
IP rating	IP67

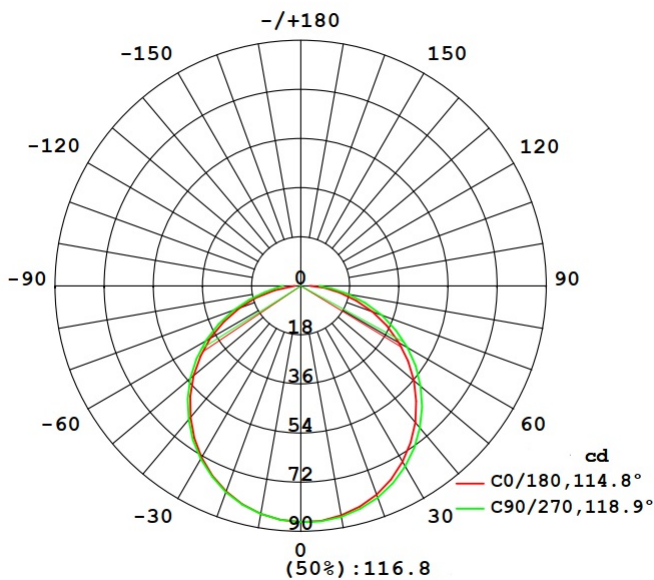
WK2424S General Specification

5. Electrical parameters

Supply voltage range	24.0±1.0 VDC
Supply Current range (per meter)	Typ.1000mA
Power range (per meter)	Typ. 24W
ESD protection	Contact 4KV, Air 8KV
Max. length for single end power-in	10 meters
Max. length for two ends power-in	15 meters
Cutting unit length	10cm

6. Optical parameters

Part No.	Colorimetric Parameters		Product Flux	CRI
	Color	Value	Typ. Lumen	
WK2424S	White	6500K	1560 lm/m	80
	White	5000K	1560 lm/m	80
	White	4000K	1560 lm/m	80
	White	3000K	1450 lm/m	80
	White	2700K	1450 lm/m	80

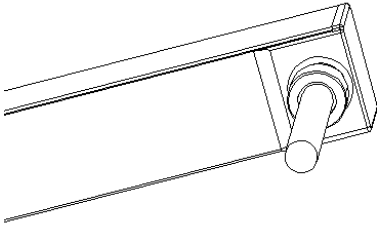


WK2424S General Specification

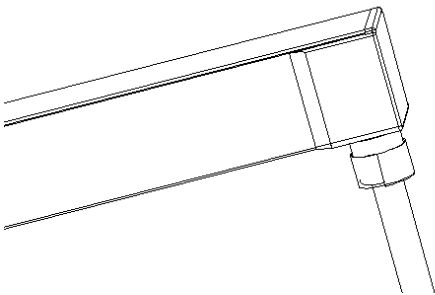
7. Connectors

7.1 IP67 power feed and end cap by injection

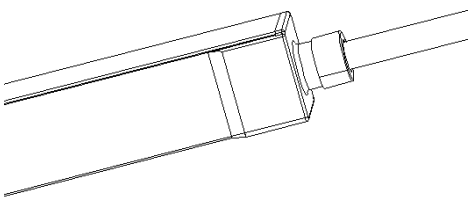
Side feeder



Bottom feeder



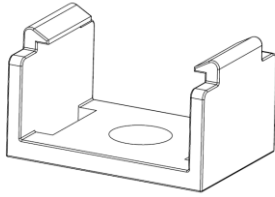
End feeder



WK2424S General Specification

8. Installation accessories

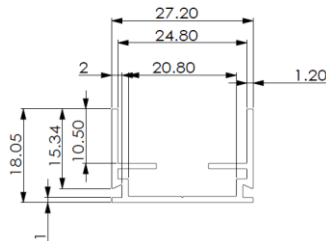
Type 1, transparent clips for indoor application



Type 2, AL profile for outdoor application (1meter per pcs, can be cut to certain length needed)



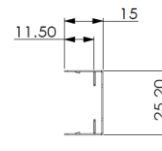
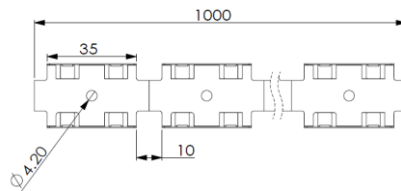
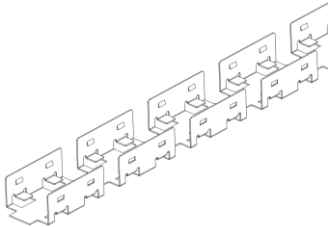
Al Profile



Type 3, AL Clips outdoor application (50mm per pcs)



Type 4, Stainless installation chain (1mtr per pcs)



9. Attention

- The LED neon itself and all its components may not be mechanical stressed.
- Please ensure that the power supply is adequate power to operate the total load. Only qualified personnel should be allowed to perform installations.
- The design of the housing should be according to the IP standards in the application.
- If surge protection structure not within power supplier, a lightning protector should be needed additionally.
- Before cutting and making reconnection, please read the user manual, and please ensure you have read and fully understand it.
- Please do not twist the product and do not bend it in wrong direction, the only bending direction as following:

