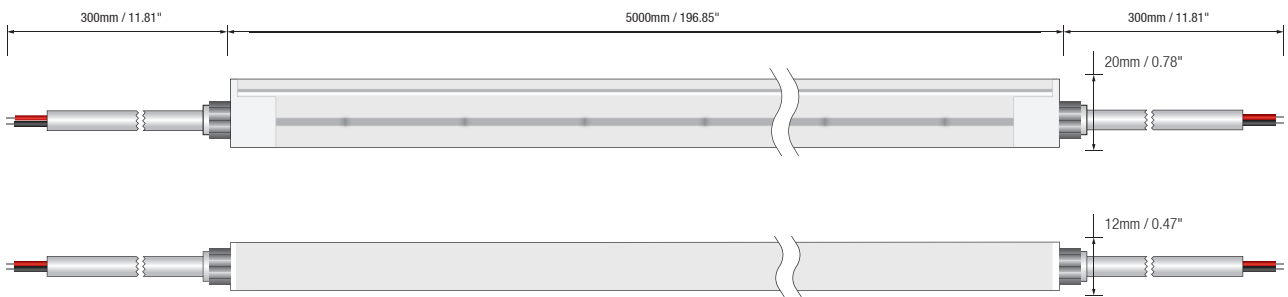


LINEAR ALPHA 1220 WHT



-Linear Alpha 1220 WHT, DC48V. Cross section size 12mm x 20mm/ 0.47" x 0.79" (W x H), which is horizontal bending with radius of 120mm / 4.72".
 -IP67 protected, UV resistant, chemical resistant and DIY connectors for indoor & outdoor solutions. Very easy to cut & reconnect on site.
 -2-Step MacAdam bin and dot free lighting guarantee the most excellent performance over the rated lifetime.

DIMENSION



Electrical data

Voltage	DC48V
LED PIN Temperature	Max. 59.4°C /138.92°F
Storage Temperature	-25°C /-13°F _{min} , 60°C /140°F _{max}
Ambient Temperature	T _{a min} = -25°C /-13°F, T _{a max} (Table below)
CRI	Ra94

Linear Led Alpha 1220 WHT Low output STD output High output

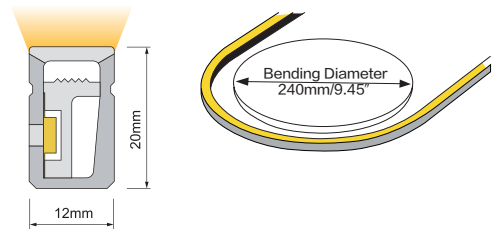
Power(W/m W/ft)	5/1.5	10/3.1	15/4.6
Efficacy(lm/W) @4000K	30	35	32
Max. Ambient tempt.(T _{a max})	55°C /131°F	45°C /113°F	35°C /95°F

(Lm/m)

CCT	2700K	3000K	3500K	4000K	5300K	Max. Run Length	Unit Cut
5W/M	146	156	160	150	155	27M	50mm
*10W/M	324	346	355	346	349	17M	50mm
15W/M	760	800	830	860	900	14M	50mm

Note:

- When ambient temperature reaches 55°C, the power is suggested to be 5W/M.
- Max. run length refers to single side feed in serial connection.
- The given data are typical values due to the tolerances of the production process and the electrical components, values for light output and electrical power can vary up to 10%.
- The given color temperature is the temperature of finished product.



2 STEP

UV PROTECTED

WATERPROOF IP67

L70B10 >54000H

LUMILEDS

30 MTS/REEL AVAILABLE

RESISTANT TO CHEMICAL

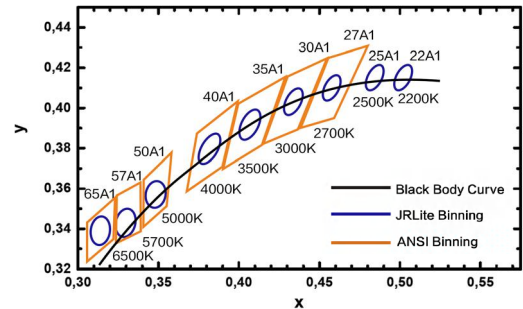


ORDER CODE

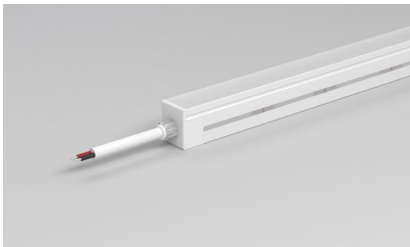
SERIES NAME	COLOR	LENGTH	POWER	CABLE ENTRY
Alpha 1220 WHT	27=2700K	05000=5M/196.85"	005=5W	F=FRONT
	30=3000K		010=10W	S=SIDE
	35=3500K		015=15W	B=BOTTOM
	40=4000K			
	53=5300K			

Example:
Alpha 1220 WHT-40-05000-010-S:
Linear Alpha 1220 WHT, 4000K,
5M/reel, 10W/M, Side cable entry

1. Max production length 30meters per reel, and the standard packaging is 10meters per reel.
2. Standard cable length is 30cm, if you need cable longer than 30cm, please mention us the required cable length.
3. Patented easy endcap achieves mechanical IP67 waterproof without any glue.
4. It is IK08 rated.
5. The standard product is without dimmable effect, if you need compatible dimmable solution, pls contact us separately.



VARIOUS CONNECTIONS



Front Cable Entry
The cable could be hidden in all directions by the flexible design.
DIY connector optional

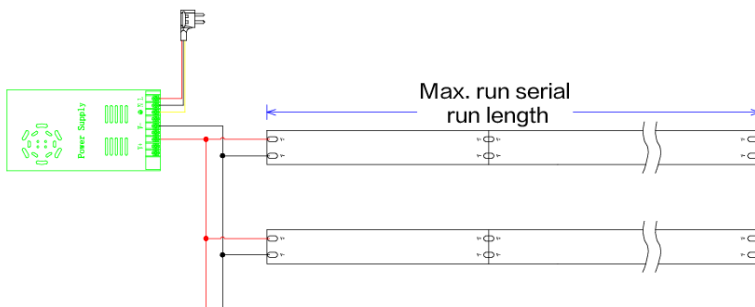


Side Cable Entry
The cable could be perfectly hidden to achieve seamless light connection.
DIY connector optional



Bottom Cable Entry
The cable could be perfectly hidden to achieve seamless light connection.
DIY connector optional

WIRING DIAGRAM



-Maximum single run length depends on the wattage of power supply and LED Strip:

5W/M - 27M Max. Single Run Length;
10W/M - 17M Max. Single Run Length;
15W/M - 14M Max. Single Run Length;
The strip is 10m/reel at standard.

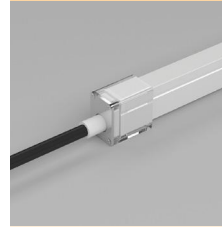
-Please contact us if >150W power supply is needed.

-Please contact us if you need dimmable function.

ACCESSORIES



Aluminium Profile
Order Code: AC015-AP
Dimension: 1000x17.3x21.1mm/
39.37"x0.68"x0.83"(LxWxH)
Material: aluminium
Color: silver



End Cap 2PIN
Order Code: AD008-2-F
Dimension: 26.5x17x24.2mm/
1.04"x0.67"x0.95"(LxWxH)
Color: transparent
Cable Entry: front



Mounting Clips
Order Code: AC016-SET
Dimension: 20x12.6x18.9mm/
0.79"x0.50"x0.74"(LxWxH)
Material: stainless steel
Color: silver
Each meter led strips needs
2 clips + 2 screws



End Cap 2PIN
Order Code: AD008-2-S
Dimension: 26.5x17x24.2mm/
1.04"x0.67"x0.95"(LxWxH)
Color: transparent
Cable Entry: side



IP67 Connector 2PIN
Order Code: AD007-2
Wire Gauge: 0.519mm²/20AWG
Protection: IP67 (Mated)
Mechanical Operation: >500
mating cycles



End Cap 2PIN
Order Code: AD008-2-B
Dimension: 26.5x17x24.2mm/
1.04"x0.67"x0.95"(LxWxH)
Color: transparent
Cable Entry: bottom



Linear Alpha Scissor
Order Code: AF001-1



Closed End Cap
Order Code: AD009
Dimension: 26.5x17x24.2mm/
1.04"x0.67"x0.95"(LxWxH)
Material: stainless steel
Color: silver

DRIVER



Order code: LRS-150-24
85-132VAC/170-264VAC
by switch DC24V 150W
IP20, global certification
Indoor use only.



Order code: XLG-150-24-A
AC100-305V DC24V 150W
IP67, Global certification.
Non Dimmable.



Order code: ELG-150-24B
AC100-305V DC24V 150W
IP67, Global certification
3in1 dimming function: 0-10Vdc,
10V PWM signal and resistance.



Order code: ELG-150-24DA
AC100-305V DC24V 150W
IP67, Global certification
Dali control technology.



APPLICATION

- ▶ Facade lighting, contour lighting and landscape lighting.
- ▶ Solutions for yachts.
- ▶ Signage and illuminated advertising.
- ▶ Ideal for architectural lighting, coves, object integration.

ADDITIONAL INFO.

- ▶ Please Light it up for a quick check before installation.
- ▶ Bending diameter of Linear Alpha 1220 WHT is 240mm, do not bend to upward or downward direction, or bend too sharp or twist. If bend it wrongly, PCB inside will be damaged and the lighting fixture will not turn on.
- ▶ During installation, please make sure there are at least two workers to cooperate together and strictly follow the instruction manuals.
- ▶ Warranty: All LED light are warranted to be free from defects in Product itself for 5 years from the date of purchase. This warranty does not cover failures due to abuse, misuse, improper handling, act of nature, negligence, normal wear, accidental damage, modifications or repairs made by the purchaser or incorrect voltage conditions.

